

**DEMA SURE-MEASURE DISPENSER**  
**MODEL 302-1 (1 fl.oz.), or 302-2 (2 fl.oz.)**  
**INSTALLATION INSTRUCTION**

**1. PARTS:**

- A. Pump Assembly
- B. Plastic tubing, 8' long
- C. 3 sheet metal screws in envelope
- D. Ceramic weight & foot strainer

**2. INSTALLATION:**

Mount pump on wall using the screws provided. Connect one end of the plastic tubing to inlet. Tubing may be cut to any convenient length before dropping into chemical container. The ceramic weight may be pushed over the end of the tubing, then foot strainer pushed into the end of the hose. The ceramic weight will hold the end of the hose toward the bottom of the container, and the foot strainer will hold the weight on.

**3. OPERATION:**

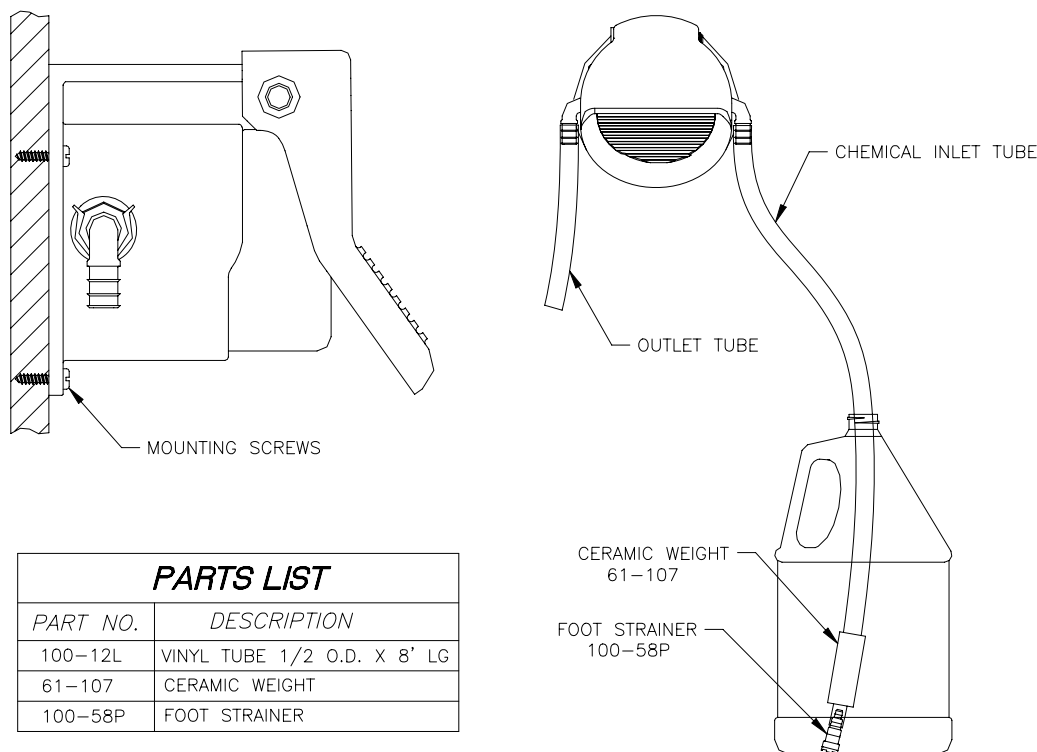
**WARNING; USE CARE WHEN HANDLING HAZARDOUS CHEMICALS.**

Push the pump handle to prime the inlet tubing. Once primed the pump will deliver the designated amount of chemical with each full stroke.

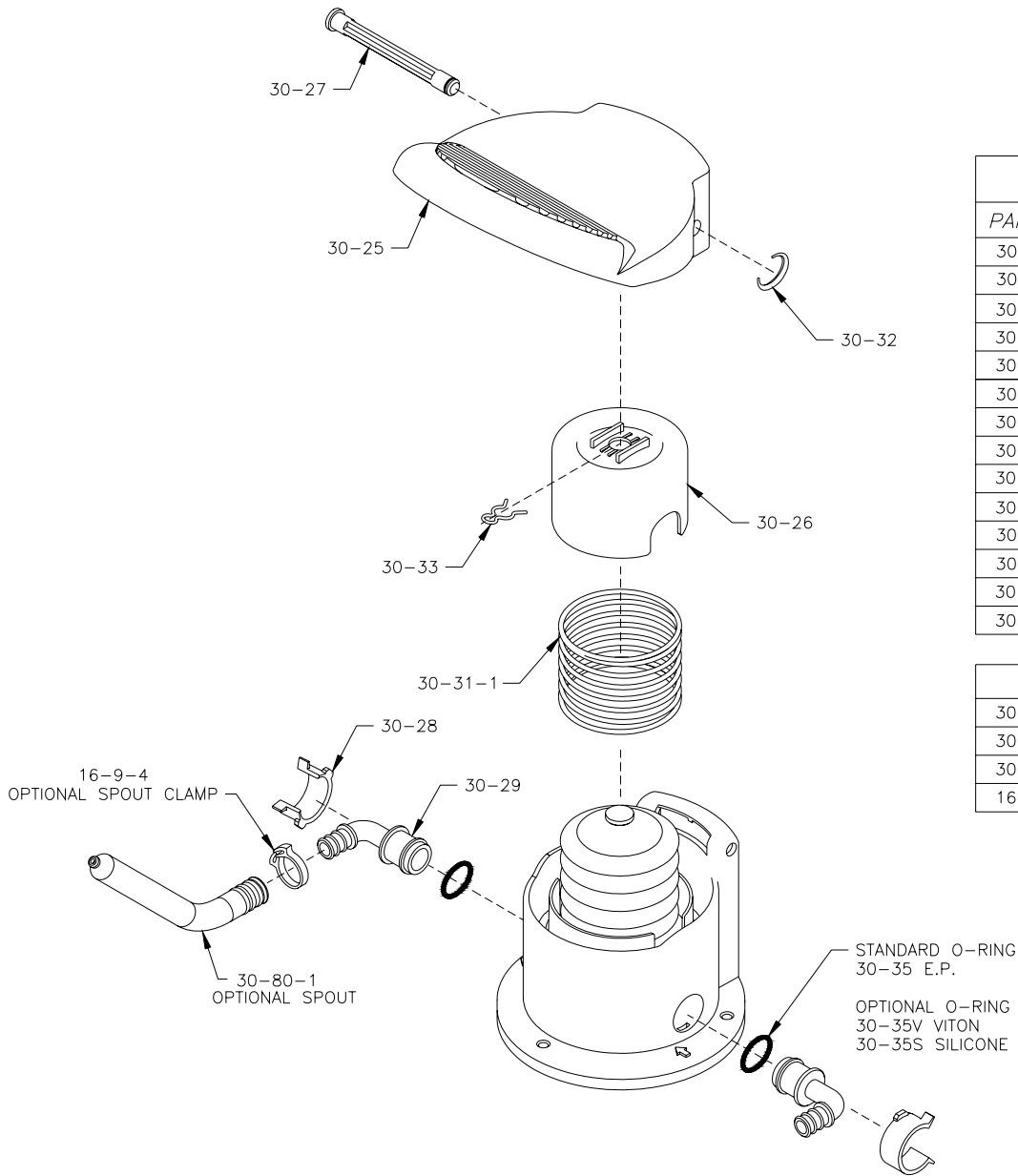
**4. SERVICING:**

Flush with warm water to dissolve any dried fluid.

**CAUTION: WHEN SERVICING UNIT BE SURE THAT REPLACEMENT PARTS HAVE BEEN INSTALLED ACCORDING TO DRAWING.**



## DEMA MODEL 302 PUMP



### **PARTS LIST**

PART NO.	DESCRIPTION
30-24-1	PUMP BASE (1 OZ)
30-24-2	PUMP BASE (2 OZ)
30-25	PUMP HANDLE
30-26	PUMP COVER
30-27	HINGE PIN
30-28	ELBOW RETAINER
30-29	ELBOW (3/8" BARB)
30-30-2	UMBRELLA SEAL-EP
30-31-1	SPRING, GALVANIZED
30-32	SNAP RING
30-33	HAIRPIN CLIP
30-34	O-RING, BASE-E.P.
30-35	O-RING, ELBOW-E.P.
30-36	BELLOWS

### **OPTIONAL**

30-35V	O-RING, ELBOW-VITON
30-35S	O-RING, ELBOW-SILICONE
30-80-1	OUTLET SPOUT
16-9-4	CLAMP